

## Fact Sheet

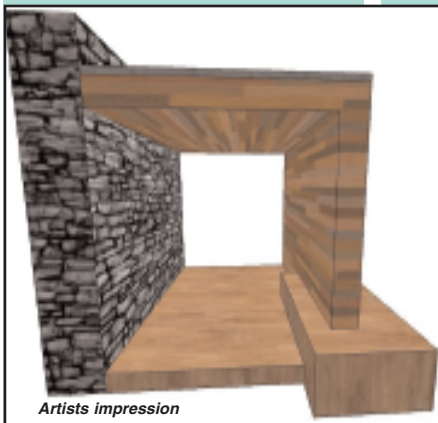
Number 5

October 2012

**This 5th Tourism Signage Committee fact sheet provides updates on the proposed Information Booths, Township Tourism Signs and the maps to be featured on them.**

Yarra Ranges Council and Yarra Valley and Dandenongs Tourism Signage Committee have been finalising details for the Information Booths and Township Tourism signs. Together they will provide a consistent link for tourists and visitors travelling throughout the Yarra Valley and Dandenong Ranges.

The aim is to develop a consistent look and feel for tourist Information, including maps. Businesses and townships can use these maps as a basis for developing tourist information. The maps will also form the basis for tourist information within the Booths and Township Tourism signs across the region.



### Information Booths

Planning is underway for building the first of the Information Booths and associated landscape works. The first Information Booth will be located within a landscaped setting at the Kalorama Lookout at Five Ways overlooking the Silvan Reservoir. Detailed construction documentation is underway and the Council is working closely with Parks Victoria to confirm planning requirements.

Map and heritage content for the Information Booth will be presented at the next Yarra Valley and Dandenongs Tourism Signage Committee meeting in October 2012.

Once there is planning approval, tendering for the construction of the Booth and associated landscape works can proceed. We look forward to seeing tourists and visitors to the Yarra Valley and the Dandenongs enjoying this dynamic new shelter.

### Township Signs

The concept for the Township Tourism signs and map information was presented to the Yarra Valley and Dandenongs Tourism Signage Committee in July. The signs will be located in nominated townships across the region.

Using 'vertical' as a theme, the concept for the sign represents the wine posts in the Yarra Valley and the tall Mountain Ash in the Dandenong Ranges. Work is underway to confirm planning approvals and to begin fabrication of the signs.

### Suite of Maps

A suite of tourist maps is being developed to provide visitors with a consistent look and feel to navigate their way around the region.

The suite includes a Region map, Area map and Township maps. The Region map includes both the Yarra Valley and Dandenong Ranges and will contain information such as major highways, towns, national parks, reservoirs and lakes, rivers, information centres and train lines.

#### There will be 5 Area maps:

1. *Melba* - covering the north-western area including Yarra Glen and Steels Creek
2. *Maroondah Highway* - covering townships along and around the Maroondah Highway
3. *Warburton Highway* - covering townships along and around the Warburton Highway
4. *Dandenongs* - covering towns within the Dandenong Ranges area
5. *Lilydale and surrounds* - covering the Lilydale area, including Chirnside Park

The Area maps will include information such as walking trails, picnic grounds, significant gardens, play spaces, aquatic centres, petrol stations, golf courses, and race courses.

Township map information will include public amenities, parking, civic buildings, main streets, shopping precincts, churches, WiFi hotspots, iPhone app information on attractions, website address and emergency assistance contact details.

